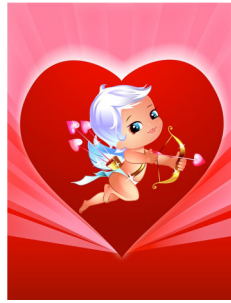


EARLY CHILDHOOD EDUCATION CENTER MEALS WEEK OF 2/13/12



	AM BREAK	CINNAMON TOAST CRUNCH, RAISIN BREAD, FRESH PINEAPPLE SLICE
2/13	LUNCH	BAKED CHICKEN BREAST, ROASTED POTATO WEDGE, CAPRI VEG., DICED PEACHES
	PM SNACK	CUCUMBER SLICES AND DIP, FRESH PEARS
	AM BREAK	ENGLISH MUFFIN, CINNAMON SUGAR TOPPING, FRESH BANANA
2/14	LUNCH	TURKEY & CHEESE WHEAT SANDWICH, STEAMED CARROTS, TROPICAL FRUIT SALAD
	PM SNACK	GOLDFISH CRACKERS, ORANGE JELLO
	AM BREAK	CRANBERRY –ORANGE MUFFIN, CRISP BACON, VANILLA YOGURT
2/15	LUNCH	VEGETABLE STIR-FRY, FLUFFY RICE, CHOW MEIN NOODLES, PEACH SLICE
	PM SNACK	VANILLA PUDDING, LORNE DOONES
	AM BREAK	SCRAMBLED EGGS, DICED HASH BROWNS, WHEAT BREAT, HONEYDEW CUBES
2/16	LUNCH	CHICKEN NOODLE SOUP, DELI HAM & CHEESE PITA, PEAS & CARROTS, GRANNY SMITH APPLE
	PM SNACK	CHERRY-VANILLA YOGURT, SEEDLESS GRAPES, (TOD, YF1,YF2-FIG NEW.)
	AM BREAK	MINI BAGEL , EGG & CHEESE SANDWICH, TROPICAL FRUIT SALAD
2/17	LUNCH	CHICKEN NUGGETS, SAUCES, BAKED TATER TOTS, WHOLE KERNEL CORN, MANDARIN ORANGES
	PM SNACK	FRESH BAKED BREADSTICK, HONEYDEW SLICE